



People.Health.Care.

# Suprasorb® X - easy and safe to handle

## Tips for dressing change with **non-infected** wounds

### Recommendation for slight exudation:

Fresh wound dressing



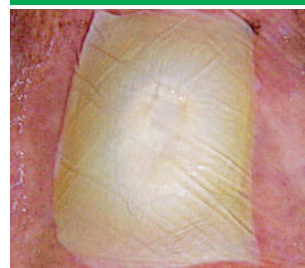
Place Suprasorb® X on the wound and smooth to shape. Apply an appropriate secondary dressing, such as a film – Suprasorb® F was used in this instance.

Far too soon for dressing change



Suprasorb® X is still moist enough and only slightly penetrated by exudate. The white dressing is only slightly discoloured.

Still too soon for dressing change



Exudate penetrates the dressing; discolouration has extended. The dressing has started to dry out from the edges.

Dressing change necessary



Suprasorb® X is still moist in the centre, a raised area may have formed. The moist area still overlaps the visible wound edges by about 1cm. The dressing is dried out and parchment-like around the edges.

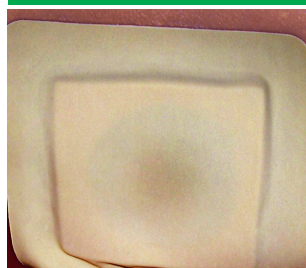
### Recommendation for moderate exudation:

Fresh wound dressing



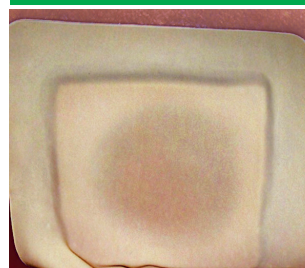
Adjust Suprasorb® X to the wound size and loosely fill into the wound. Apply an appropriate secondary dressing, such as a foam.

Too soon for dressing change



A brownish discoloration shows the absorption of exudate by the foam.

Dressing change necessary



The discoloration has spread. The absorption capacity of Suprasorb® X and the foam is used up; the dressing must be changed.

Dressing change necessary



Suprasorb® X has absorbed the exudate and taken on the shape of the wound. The dressing must be changed.



Tip

### The Suprasorb® X Hydration Effect\*

\*applicable also for Suprasorb® X+PHMB

**Suprasorb® X enhances the health of the tissue surrounding the wound**



**Before cleaning:** By applying Suprasorb® X in such a way that it overlaps the wound, old epithelial cells are moistened. They show as whitish deposits around the wound - this should not be confused with maceration, as it is rehydrated tissue and these whitish deposits are easy to remove with a moist swab.



**After cleaning:** Healthy epithelial tissue can be seen around the wound margin.



People.Health.Care.

# Suprasorb® X+PHMB

## Tips for dressing change with critically colonised and infected wounds

### Recommendations for light to moderate exudation:

**Fresh wound dressing**



Place Suprasorb® X+PHMB on the wound and smooth to shape. Apply an appropriate secondary dressing, such as a film or foam (depending on exudate levels).

**Too soon for dressing change**



The wound dressing's discoloration shows the absorption of exudate. The discoloration may be reddish if the exudate contains blood.

**Dressing change necessary**



The dressing should be changed when the discoloration has almost reached the edge of the secondary dressing (approx 1cm).

**Dressing change too late**



Do not allow exudate to seep too close to the edge of the secondary dressing or allow exudate to strike-through.

### Filling a wound with Suprasorb® X+PHMB

**Fold the wound dressing**



Adjust Suprasorb® X+PHMB to the wound size and, using forceps, loosely fill the wound cavity.

**Application of the wound dressing**



Filling the wound with Suprasorb® X+PHMB.

**Finished primary dressing**



The finished Suprasorb® X+PHMB wound dressing.

**Secondary dressing, Securing**



Secure with a secondary dressing and then any bandaging as necessary.



### Tip Dressing techniques\*

\*applicable also for Suprasorb® X

#### Increasing the moisture reserve



1. Cover the wound area with Suprasorb® X+PHMB (left photo).
  2. To increase the moisture reserve in the wound area (right photo), apply a second layer of Suprasorb® X+PHMB, over a large surface.
- Aim: to prolong the dressing change interval.

#### Removal of the dressing



In the unlikely event that Suprasorb® X+PHMB dries out during wear, simply rehydrate the dressing (e.g. using saline or tap water, as per local protocol) — this enables gentle removal without disturbing the wound.

Call our Customer Solutions line: **08450 606707**  
International enquiries: **+44 1283 576800**  
or visit our website at: **www.Lohmann-Rauscher.co.uk**